

Acta Crystallographica Section E

Structure Reports

Online

ISSN 1600-5368

2-(4,6-Dimethylpyrimidin-2-ylsulfanyl)-
N-(4-methylpyridin-2-yl)acetamide

Dong Liang, Li-Xing Gao, Yan Gao, Jing Xu and Wei Wang*

School of Chemical Engineering, University of Science and Technology Liaoning, Anshan 114051, People's Republic of China

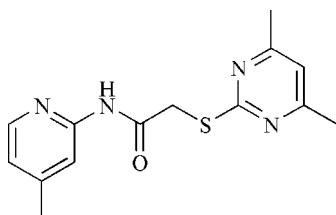
Correspondence e-mail: tj_u_chemistry@yahoo.com.cn

Received 23 November 2007; accepted 28 November 2007

Key indicators: single-crystal X-ray study; $T = 293$ K; mean $\sigma(\text{C}-\text{C}) = 0.004$ Å; R factor = 0.048; wR factor = 0.144; data-to-parameter ratio = 16.1.

The non-H atoms of the title molecule, $\text{C}_{14}\text{H}_{16}\text{N}_4\text{OS}$, are coplanar, with an r.m.s. deviation of 0.039 Å. The dihedral angle between the two aromatic rings is $2.4(2)^\circ$. An intramolecular $\text{C}-\text{H}\cdots\text{O}$ hydrogen bond is observed. The molecules exist as $\text{N}-\text{H}\cdots\text{N}$ hydrogen-bonded centrosymmetric dimers.

Related literature

For related literature, see: Koike *et al.* (1999).

Experimental

Crystal data

 $\text{C}_{14}\text{H}_{16}\text{N}_4\text{OS}$ $M_r = 288.37$ Monoclinic, $P2_1/c$ $a = 5.1924(19)$ Å $b = 15.423(5)$ Å $c = 18.121(6)$ Å $\beta = 91.678(6)^\circ$ $V = 1450.5(9)$ Å³ $Z = 4$ Mo $K\alpha$ radiation $\mu = 0.22$ mm⁻¹ $T = 293(2)$ K $0.40 \times 0.24 \times 0.20$ mm

Data collection

Bruker SMART CCD area-detector diffractometer

Absorption correction: multi-scan (SADABS; Bruker, 1997)

 $T_{\min} = 0.916$, $T_{\max} = 0.957$

8084 measured reflections

2970 independent reflections

1582 reflections with $I > 2\sigma(I)$ $R_{\text{int}} = 0.060$

Refinement

 $R[F^2 > 2\sigma(F^2)] = 0.048$ $wR(F^2) = 0.144$ $S = 0.98$

2970 reflections

184 parameters

H-atom parameters constrained

 $\Delta\rho_{\text{max}} = 0.27$ e Å⁻³ $\Delta\rho_{\text{min}} = -0.23$ e Å⁻³

Table 1

Hydrogen-bond geometry (Å, °).

| $D-H\cdots A$ | $D-H$ | $H\cdots A$ | $D\cdots A$ | $D-H\cdots A$ |
|---|-------|-------------|-------------|---------------|
| $\text{N3}-\text{H3A}\cdots\text{N4}^i$ | 0.86 | 2.31 | 3.171 (3) | 174 |
| $\text{C10}-\text{H10}\cdots\text{O1}$ | 0.93 | 2.20 | 2.821 (4) | 123 |

Symmetry code: (i) $-x + 2, -y, -z + 1$.

Data collection: SMART (Bruker, 1997); cell refinement: SAINT (Bruker, 1997); data reduction: SAINT; program(s) used to solve structure: SHELXS97 (Sheldrick, 1997); program(s) used to refine structure: SHELXL97 (Sheldrick, 1997); molecular graphics: SHELXTL (Bruker, 1997); software used to prepare material for publication: SHELXTL.

Supplementary data and figures for this paper are available from the IUCr electronic archives (Reference: CI2528).

References

- Bruker (1997). SMART (Version 5.611), SAINT (Version 6.0), SADABS (Version 2.03) and SHELXTL (Version 5.10). Bruker AXS Inc., Madison, Wisconsin, USA.
- Koike, K., Jia, Z., Nikaido, T., Liu, Y., Zhao, Y. & Guo, D. (1999). *Org. Lett.* **1**, 197–198.
- Sheldrick, G. M. (1997). SHELXS97 and SHELXL97. University of Göttingen, Germany.

supplementary materials

Acta Cryst. (2008). E64, o201 [doi:10.1107/S1600536807064082]

2-(4,6-Dimethylpyrimidin-2-ylsulfanyl)-*N*-(4-methylpyridin-2-yl)acetamide

D. Liang, L.-X. Gao, Y. Gao, J. Xu and W. Wang

Comment

Acetamide is an important class of medical intermediate. Many biologically active compounds are prepared by using acetamide (Koike *et al.*, 1999). The title compound was prepared from the reaction of 2-thio-4,6-dimethylpyrimidine with 2-chloro-*N*-(5-methylpyridin-2-yl)acetamide. We report here the crystal structure of the title compound.

The non-hydrogen atoms of the title molecule are coplanar, with an r.m.s. deviation of 0.039 Å. The dihedral angle between the two heterocyclic rings is 2.4 (2)°. The O1—C8—N3 [124.3 (2)°] and N3—C8—C7 [113.9 (2)°] angles deviate significantly from the ideal value of 120°. Due to the *p*- π conjugation between the S atom and the pyrimidine ring, the S1—C1 bond distance [1.756 (3) Å] is slightly shorter than the S1—C7 bond distance [1.794 (3) Å]. An intramolecular C—H \cdots O hydrogen bond is observed. The molecules exist as N—H \cdots O hydrogen-bonded centrosymmetric dimer (Table 1).

Experimental

The title compound was synthesized by the reaction of 2-thio-4,6-dimethylpyrimidine (2 mmol) with 2-chloro-*N*-(5-methylpyridin-2-yl)acetamide (2 mmol) in refluxing ethanol (40 ml). Single crystals suitable for X-ray analysis were grown by slow evaporation of a chloroform-acetone (1:5 *v/v*) solution.

Refinement

All H atoms were positioned geometrically and refined as riding (N—H = 0.86 Å and C—H = 0.93–0.97 Å). For the CH and CH₂ groups, $U_{\text{iso}}(\text{H})$ values were set equal to 1.2 $U_{\text{eq}}(\text{C})$ and for the methyl groups they were set equal to 1.5 $U_{\text{eq}}(\text{C})$.

Figures

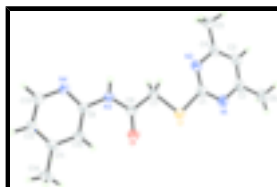


Fig. 1. The molecular structure of the title compound, showing the atom-labelling scheme. Displacement ellipsoids are drawn at the 35% probability level.

2-(4,6-Dimethylpyrimidin-2-ylsulfanyl)-*N*-(4-methylpyridin-2-yl)acetamide

Crystal data

C₁₄H₁₆N₄OS

$M_r = 288.37$

Monoclinic, $P2_1/c$

$F_{000} = 608$

$D_x = 1.320 \text{ Mg m}^{-3}$

Melting point: 418 K

supplementary materials

Hall symbol: -P 2ybc

$a = 5.1924 (19) \text{ \AA}$

$b = 15.423 (5) \text{ \AA}$

$c = 18.121 (6) \text{ \AA}$

$\beta = 91.678 (6)^\circ$

$V = 1450.5 (9) \text{ \AA}^3$

$Z = 4$

Mo $K\alpha$ radiation

$\lambda = 0.71073 \text{ \AA}$

Cell parameters from 1663 reflections

$\theta = 2.6\text{--}22.2^\circ$

$\mu = 0.22 \text{ mm}^{-1}$

$T = 293 (2) \text{ K}$

Plate, colourless

$0.40 \times 0.24 \times 0.20 \text{ mm}$

Data collection

Bruker SMART CCD area-detector
diffractometer

Radiation source: fine-focus sealed tube

Monochromator: graphite

$T = 293(2) \text{ K}$

φ and ω scans

Absorption correction: multi-scan
(SADABS; Bruker, 1997)

$T_{\min} = 0.916$, $T_{\max} = 0.957$

8084 measured reflections

2970 independent reflections

1582 reflections with $I > 2\sigma(I)$

$R_{\text{int}} = 0.060$

$\theta_{\max} = 26.4^\circ$

$\theta_{\min} = 1.7^\circ$

$h = -6 \rightarrow 4$

$k = -17 \rightarrow 19$

$l = -22 \rightarrow 22$

Refinement

Refinement on F^2

Least-squares matrix: full

$R[F^2 > 2\sigma(F^2)] = 0.048$

$wR(F^2) = 0.144$

$S = 0.98$

2970 reflections

184 parameters

Primary atom site location: structure-invariant direct
methods

Secondary atom site location: difference Fourier map

Hydrogen site location: inferred from neighbouring
sites

H-atom parameters constrained

$w = 1/[\sigma^2(F_o^2) + (0.0718P)^2]$

where $P = (F_o^2 + 2F_c^2)/3$

$(\Delta/\sigma)_{\max} = 0.004$

$\Delta\rho_{\max} = 0.27 \text{ e \AA}^{-3}$

$\Delta\rho_{\min} = -0.23 \text{ e \AA}^{-3}$

Extinction correction: none

Special details

Geometry. All e.s.d.'s (except the e.s.d. in the dihedral angle between two l.s. planes) are estimated using the full covariance matrix. The cell e.s.d.'s are taken into account individually in the estimation of e.s.d.'s in distances, angles and torsion angles; correlations between e.s.d.'s in cell parameters are only used when they are defined by crystal symmetry. An approximate (isotropic) treatment of cell e.s.d.'s is used for estimating e.s.d.'s involving l.s. planes.

Refinement. Refinement of F^2 against ALL reflections. The weighted R -factor wR and goodness of fit S are based on F^2 , conventional R -factors R are based on F , with F set to zero for negative F^2 . The threshold expression of $F^2 > 2\sigma(F^2)$ is used only for calculating R -factors(gt) *etc.* and is not relevant to the choice of reflections for refinement. R -factors based on F^2 are statistically about twice as large as those based on F , and R -factors based on ALL data will be even larger.

Fractional atomic coordinates and isotropic or equivalent isotropic displacement parameters (\AA^2)

| | x | y | z | $U_{\text{iso}}^*/U_{\text{eq}}$ |
|------|--------------|---------------|--------------|----------------------------------|
| S1 | 0.19772 (16) | 0.06150 (5) | 0.30190 (4) | 0.0565 (3) |
| O1 | 0.4584 (4) | 0.17627 (12) | 0.39721 (11) | 0.0629 (6) |
| C8 | 0.5502 (6) | 0.10500 (16) | 0.40685 (14) | 0.0424 (7) |
| N3 | 0.7497 (4) | 0.08705 (13) | 0.45581 (11) | 0.0437 (6) |
| H3A | 0.7929 | 0.0334 | 0.4603 | 0.052* |
| N1 | -0.0905 (5) | -0.02849 (15) | 0.21206 (12) | 0.0526 (6) |
| N2 | 0.2279 (4) | -0.11038 (14) | 0.28121 (12) | 0.0487 (6) |
| N4 | 1.0824 (5) | 0.11059 (13) | 0.54011 (12) | 0.0471 (6) |
| C7 | 0.4517 (5) | 0.02656 (16) | 0.36422 (15) | 0.0466 (7) |
| H7A | 0.3873 | -0.0166 | 0.3980 | 0.056* |
| H7B | 0.5901 | 0.0008 | 0.3369 | 0.056* |
| C1 | 0.1057 (6) | -0.03772 (17) | 0.26160 (15) | 0.0464 (7) |
| C9 | 0.8914 (5) | 0.14679 (15) | 0.49939 (13) | 0.0390 (7) |
| C10 | 0.8368 (6) | 0.23511 (16) | 0.50028 (15) | 0.0493 (7) |
| H10 | 0.7006 | 0.2572 | 0.4716 | 0.059* |
| C3 | -0.0551 (6) | -0.18068 (19) | 0.19480 (16) | 0.0566 (8) |
| H3 | -0.1119 | -0.2310 | 0.1712 | 0.068* |
| C12 | 1.1828 (6) | 0.25295 (18) | 0.58610 (17) | 0.0580 (8) |
| H12 | 1.2871 | 0.2874 | 0.6167 | 0.070* |
| C4 | 0.1449 (6) | -0.18362 (18) | 0.24637 (16) | 0.0502 (7) |
| C2 | -0.1703 (6) | -0.1016 (2) | 0.17864 (15) | 0.0535 (8) |
| C5 | 0.2828 (6) | -0.26511 (18) | 0.26755 (19) | 0.0677 (9) |
| H5A | 0.4476 | -0.2663 | 0.2449 | 0.102* |
| H5B | 0.1828 | -0.3142 | 0.2511 | 0.102* |
| H5C | 0.3067 | -0.2673 | 0.3202 | 0.102* |
| C13 | 1.2229 (6) | 0.16531 (18) | 0.58239 (17) | 0.0611 (9) |
| H13 | 1.3570 | 0.1421 | 0.6112 | 0.073* |
| C6 | -0.3885 (7) | -0.0931 (2) | 0.12243 (18) | 0.0747 (10) |
| H6A | -0.5028 | -0.0478 | 0.1372 | 0.112* |
| H6B | -0.4812 | -0.1469 | 0.1191 | 0.112* |
| H6C | -0.3205 | -0.0792 | 0.0752 | 0.112* |
| C11 | 0.9856 (6) | 0.28937 (17) | 0.54384 (15) | 0.0507 (8) |
| C14 | 0.9279 (7) | 0.38546 (17) | 0.54669 (19) | 0.0782 (11) |
| H14A | 0.8268 | 0.3977 | 0.5890 | 0.117* |
| H14B | 0.8337 | 0.4023 | 0.5026 | 0.117* |
| H14C | 1.0866 | 0.4173 | 0.5503 | 0.117* |

Atomic displacement parameters (\AA^2)

| | U^{11} | U^{22} | U^{33} | U^{12} | U^{13} | U^{23} |
|----|-------------|-------------|-------------|-------------|--------------|--------------|
| S1 | 0.0590 (5) | 0.0408 (4) | 0.0681 (5) | 0.0027 (4) | -0.0256 (4) | -0.0038 (4) |
| O1 | 0.0813 (16) | 0.0368 (11) | 0.0683 (13) | 0.0118 (10) | -0.0348 (12) | -0.0053 (9) |
| C8 | 0.0517 (18) | 0.0305 (15) | 0.0445 (16) | 0.0044 (13) | -0.0055 (14) | -0.0006 (12) |
| N3 | 0.0501 (15) | 0.0285 (11) | 0.0516 (14) | 0.0060 (10) | -0.0152 (12) | -0.0033 (10) |

supplementary materials

| | | | | | | |
|-----|-------------|-------------|-------------|--------------|--------------|--------------|
| N1 | 0.0499 (16) | 0.0553 (15) | 0.0518 (15) | -0.0103 (12) | -0.0128 (12) | 0.0042 (12) |
| N2 | 0.0498 (16) | 0.0438 (14) | 0.0521 (14) | -0.0044 (11) | -0.0070 (12) | -0.0049 (11) |
| N4 | 0.0469 (15) | 0.0359 (13) | 0.0574 (14) | 0.0054 (11) | -0.0174 (12) | -0.0049 (11) |
| C7 | 0.0497 (18) | 0.0393 (16) | 0.0502 (17) | 0.0008 (13) | -0.0118 (14) | -0.0047 (13) |
| C1 | 0.0471 (18) | 0.0445 (17) | 0.0476 (17) | -0.0084 (13) | -0.0029 (14) | 0.0002 (13) |
| C9 | 0.0419 (17) | 0.0334 (14) | 0.0414 (15) | 0.0019 (12) | -0.0031 (13) | -0.0014 (12) |
| C10 | 0.0582 (19) | 0.0341 (15) | 0.0546 (18) | 0.0111 (13) | -0.0154 (15) | -0.0024 (13) |
| C3 | 0.060 (2) | 0.0498 (19) | 0.0594 (19) | -0.0169 (16) | -0.0021 (16) | -0.0065 (15) |
| C12 | 0.062 (2) | 0.0379 (17) | 0.072 (2) | -0.0005 (14) | -0.0252 (17) | -0.0088 (14) |
| C4 | 0.0496 (19) | 0.0465 (17) | 0.0544 (18) | -0.0109 (14) | -0.0015 (15) | -0.0074 (14) |
| C2 | 0.0496 (19) | 0.063 (2) | 0.0477 (18) | -0.0202 (16) | -0.0086 (15) | 0.0012 (14) |
| C5 | 0.075 (2) | 0.0444 (18) | 0.083 (2) | -0.0057 (16) | -0.0081 (19) | -0.0105 (16) |
| C13 | 0.057 (2) | 0.0455 (18) | 0.079 (2) | 0.0046 (15) | -0.0272 (17) | -0.0055 (15) |
| C6 | 0.071 (2) | 0.081 (2) | 0.070 (2) | -0.0275 (19) | -0.0276 (19) | 0.0112 (18) |
| C11 | 0.062 (2) | 0.0339 (15) | 0.0554 (18) | 0.0007 (14) | -0.0062 (16) | -0.0046 (13) |
| C14 | 0.104 (3) | 0.0346 (17) | 0.094 (3) | 0.0064 (17) | -0.028 (2) | -0.0098 (16) |

Geometric parameters (Å, °)

| | | | |
|-----------|-------------|------------|-----------|
| S1—C1 | 1.756 (3) | C3—C2 | 1.386 (4) |
| S1—C7 | 1.794 (3) | C3—H3 | 0.93 |
| O1—C8 | 1.209 (3) | C12—C13 | 1.369 (4) |
| C8—N3 | 1.372 (3) | C12—C11 | 1.380 (4) |
| C8—C7 | 1.516 (3) | C12—H12 | 0.93 |
| N3—C9 | 1.407 (3) | C4—C5 | 1.491 (4) |
| N3—H3A | 0.86 | C2—C6 | 1.507 (4) |
| N1—C2 | 1.340 (3) | C5—H5A | 0.96 |
| N1—C1 | 1.346 (3) | C5—H5B | 0.96 |
| N2—C1 | 1.331 (3) | C5—H5C | 0.96 |
| N2—C4 | 1.358 (3) | C13—H13 | 0.93 |
| N4—C9 | 1.341 (3) | C6—H6A | 0.96 |
| N4—C13 | 1.341 (3) | C6—H6B | 0.96 |
| C7—H7A | 0.97 | C6—H6C | 0.96 |
| C7—H7B | 0.97 | C11—C14 | 1.513 (4) |
| C9—C10 | 1.391 (3) | C14—H14A | 0.96 |
| C10—C11 | 1.373 (4) | C14—H14B | 0.96 |
| C10—H10 | 0.93 | C14—H14C | 0.96 |
| C3—C4 | 1.377 (4) | | |
| C1—S1—C7 | 100.72 (13) | N2—C4—C3 | 120.7 (3) |
| O1—C8—N3 | 124.3 (2) | N2—C4—C5 | 116.0 (3) |
| O1—C8—C7 | 121.8 (3) | C3—C4—C5 | 123.3 (3) |
| N3—C8—C7 | 113.9 (2) | N1—C2—C3 | 121.3 (3) |
| C8—N3—C9 | 127.1 (2) | N1—C2—C6 | 116.6 (3) |
| C8—N3—H3A | 116.5 | C3—C2—C6 | 122.1 (3) |
| C9—N3—H3A | 116.5 | C4—C5—H5A | 109.5 |
| C2—N1—C1 | 115.5 (2) | C4—C5—H5B | 109.5 |
| C1—N2—C4 | 115.7 (2) | H5A—C5—H5B | 109.5 |
| C9—N4—C13 | 115.7 (2) | C4—C5—H5C | 109.5 |
| C8—C7—S1 | 108.17 (18) | H5A—C5—H5C | 109.5 |

| | | | |
|---------------|--------------|-----------------|------------|
| C8—C7—H7A | 110.1 | H5B—C5—H5C | 109.5 |
| S1—C7—H7A | 110.1 | N4—C13—C12 | 124.6 (3) |
| C8—C7—H7B | 110.1 | N4—C13—H13 | 117.7 |
| S1—C7—H7B | 110.1 | C12—C13—H13 | 117.7 |
| H7A—C7—H7B | 108.4 | C2—C6—H6A | 109.5 |
| N2—C1—N1 | 127.8 (2) | C2—C6—H6B | 109.5 |
| N2—C1—S1 | 120.1 (2) | H6A—C6—H6B | 109.5 |
| N1—C1—S1 | 112.1 (2) | C2—C6—H6C | 109.5 |
| N4—C9—C10 | 123.3 (2) | H6A—C6—H6C | 109.5 |
| N4—C9—N3 | 113.7 (2) | H6B—C6—H6C | 109.5 |
| C10—C9—N3 | 123.0 (2) | C10—C11—C12 | 117.8 (2) |
| C11—C10—C9 | 119.5 (2) | C10—C11—C14 | 120.5 (3) |
| C11—C10—H10 | 120.3 | C12—C11—C14 | 121.6 (3) |
| C9—C10—H10 | 120.3 | C11—C14—H14A | 109.5 |
| C4—C3—C2 | 119.0 (3) | C11—C14—H14B | 109.5 |
| C4—C3—H3 | 120.5 | H14A—C14—H14B | 109.5 |
| C2—C3—H3 | 120.5 | C11—C14—H14C | 109.5 |
| C13—C12—C11 | 119.1 (3) | H14A—C14—H14C | 109.5 |
| C13—C12—H12 | 120.5 | H14B—C14—H14C | 109.5 |
| C11—C12—H12 | 120.5 | | |
| O1—C8—N3—C9 | -4.1 (5) | N3—C9—C10—C11 | -179.4 (2) |
| C7—C8—N3—C9 | 175.6 (2) | C1—N2—C4—C3 | -0.5 (4) |
| O1—C8—C7—S1 | 0.8 (4) | C1—N2—C4—C5 | 179.4 (3) |
| N3—C8—C7—S1 | -178.85 (19) | C2—C3—C4—N2 | 0.2 (4) |
| C1—S1—C7—C8 | -177.95 (19) | C2—C3—C4—C5 | -179.7 (3) |
| C4—N2—C1—N1 | 0.6 (4) | C1—N1—C2—C3 | -0.1 (4) |
| C4—N2—C1—S1 | -179.3 (2) | C1—N1—C2—C6 | -179.5 (3) |
| C2—N1—C1—N2 | -0.2 (4) | C4—C3—C2—N1 | 0.1 (5) |
| C2—N1—C1—S1 | 179.6 (2) | C4—C3—C2—C6 | 179.5 (3) |
| C7—S1—C1—N2 | -1.0 (3) | C9—N4—C13—C12 | 0.1 (4) |
| C7—S1—C1—N1 | 179.1 (2) | C11—C12—C13—N4 | -0.1 (5) |
| C13—N4—C9—C10 | -0.5 (4) | C9—C10—C11—C12 | -0.9 (4) |
| C13—N4—C9—N3 | 179.8 (2) | C9—C10—C11—C14 | -179.1 (3) |
| C8—N3—C9—N4 | -177.6 (2) | C13—C12—C11—C10 | 0.5 (5) |
| C8—N3—C9—C10 | 2.8 (4) | C13—C12—C11—C14 | 178.7 (3) |
| N4—C9—C10—C11 | 0.9 (4) | | |

Hydrogen-bond geometry (Å, °)

| <i>D</i> —H... <i>A</i> | <i>D</i> —H | H... <i>A</i> | <i>D</i> ... <i>A</i> | <i>D</i> —H... <i>A</i> |
|--------------------------|-------------|---------------|-----------------------|-------------------------|
| N3—H3A...N4 ⁱ | 0.86 | 2.31 | 3.171 (3) | 174 |
| C10—H10...O1 | 0.93 | 2.20 | 2.821 (4) | 123 |

Symmetry codes: (i) $-x+2, -y, -z+1$.

Fig. 1

